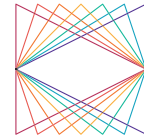


# HIGH-POWER BEAM COUPLERS



OPIPHOTONICS

OPI Laser Beam Couplers allow the interconnection between the feeding fiber (from the laser source) and the process fiber (to the processing head). The laser delivery fiber (feeding) is thus detached from the processing head (harsh environment) and the process fiber patch cord can be easily replaced if damaged.

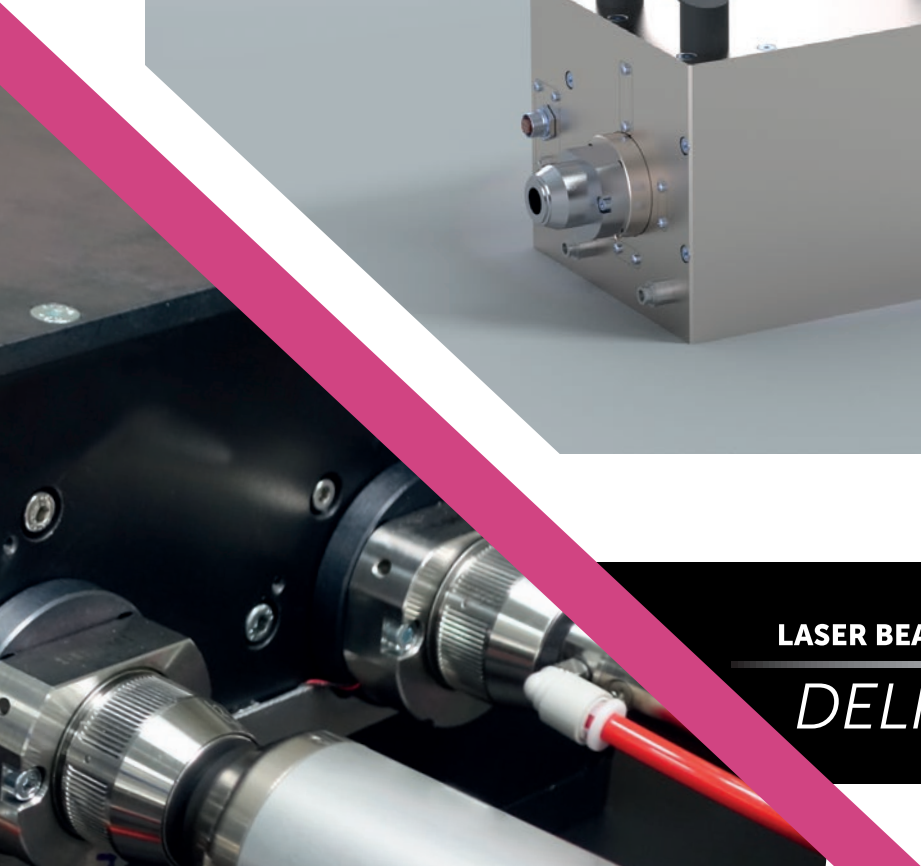
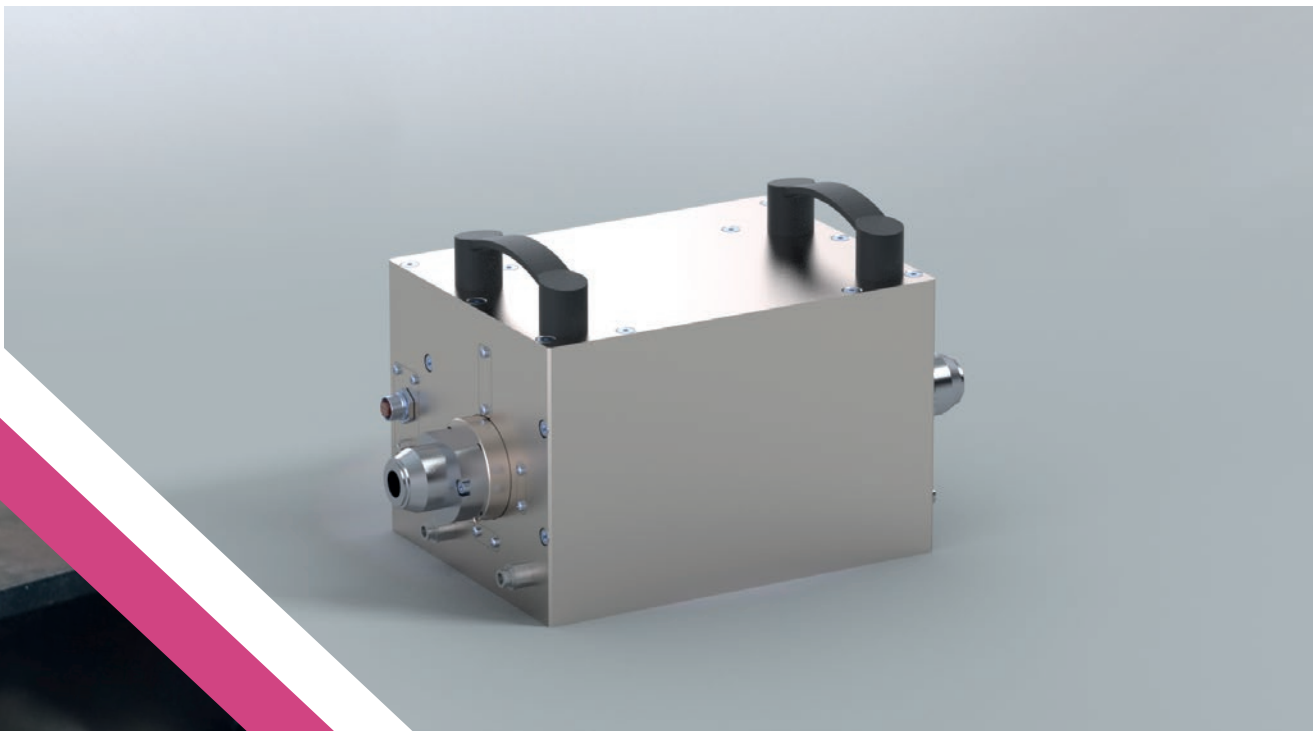
Fiber (1030-1090 nm) or direct diode (800-1100 nm) laser beams up to 10 kW are fiber to fiber coupled using high quality fused silica optics. Laser Beam Couplers come pre-aligned to guarantee the best performance in the most common working conditions. Product configuration depends on the type of laser source, optical fibers, and cable connectors.

- UP TO 10 kW
- LOW POWER LOSS
- EASY REPLACEMENT OF PROCESS FIBER
- FIBER AND DIRECT DIODE LASER

### Main Features:

- QBH, QD, Q5, PT-F compatible
- Magnification 0.6, 1.0, and 1.2
- High quality fused silica lenses
- Up to 10 kW average power
- Water cooling

	FIBER LASER	DIRECT DIODE
Wavelength	1030-1090 nm	800-1100 nm
Power	8 kW	10 kW
Magnification	0.8 - 1 - 1.2 - 2	0.8 - 1 - 1.2 - 2
Maximum NA	0.18	0.26



LASER BEAM

DELIVERY SYSTEMS